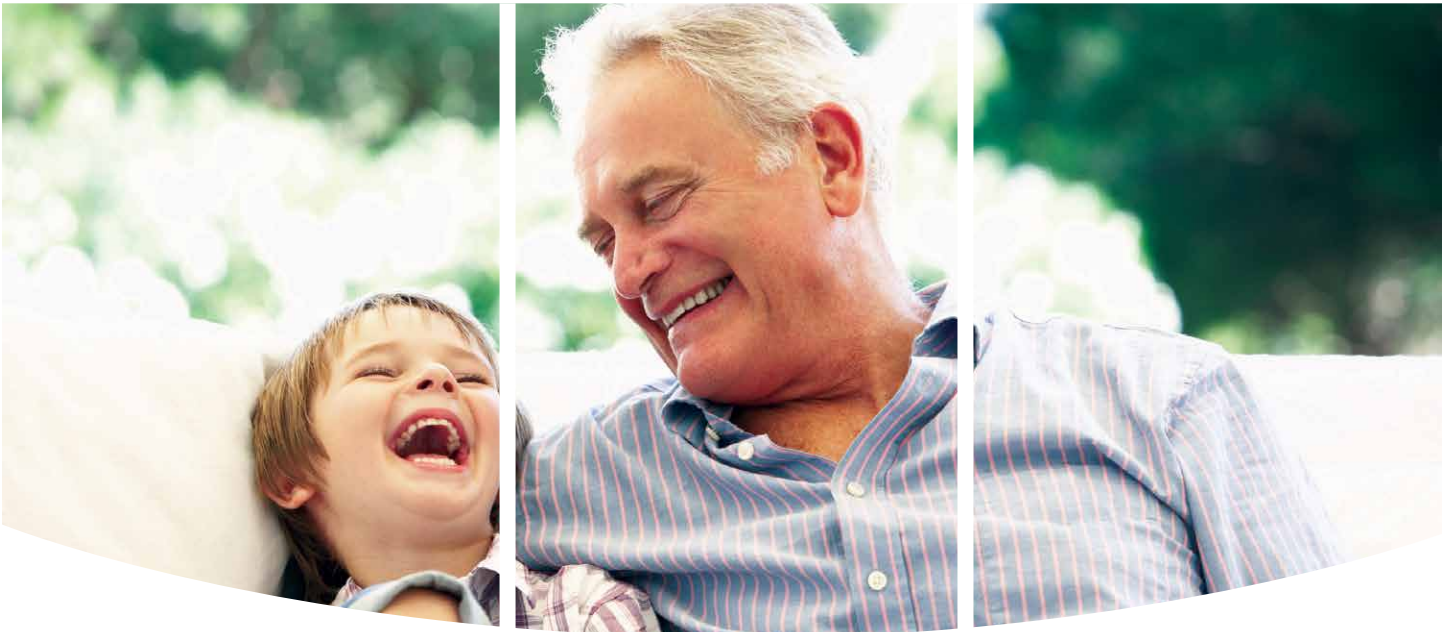


Premier Assisted Living and Memory Care Community



# *Living in style and comfort*



At Mt. Bachelor Assisted Living and Memory Care in Bend, residents enjoy an active, engaging lifestyle that promotes wellness and independence. It is our goal to keep our residents linked to resources and opportunities in the community that will fulfill their needs, interests, and goals. Residents have many opportunities to participate in a variety of life enriching activities and events designed to stimulate the mind, body and soul. From cocktail-hour gatherings where you can learn about the nuances of a good Pinot Noir, to a discussion of the latest best seller in our Life-Long Learning series, to exploring new ways to stay healthy in a fitness class...expect the unexpected. When what you desire most is exactly where you want it to be, celebrate!



## Excellent Services Tailored to Different Needs...

The Meadow at Mt. Bachelor Memory Care neighborhood offers comprehensive and caring Alzheimer's and dementia care. The mission of our supportive community is to serve the special needs of individuals with Alzheimer's disease, dementia and other forms of memory loss. The residence is a comforting environment, deftly incorporating safety and supportive cues throughout... even in the secured courtyard and inside walking path.

The Meadow offers programs to help those individuals with memory loss maintain function. Our individually tailored life program provides the stability of a routine while maximizing independence and autonomy. We develop close bonds between residents, their families, and our caregivers. Memory care can be different...let The Meadow at Mt. Bachelor show you how.

### Apartment Choice:

This is a very private setting where residents are comforted by having their own décor, furnishings and more. We offer private apartments with shared or private bathrooms. All apartments come with 24-Hour emergency call systems, closets, individualized heating/cooling and access to community amenities.

### Some of our Personalized Services include:

- Medication management
- Showering and bathing
- Dressing and laundry
- Personal hygiene and grooming
- Mobility and transferring
- Continence management
- Level appropriate activities
- Assistance with eating

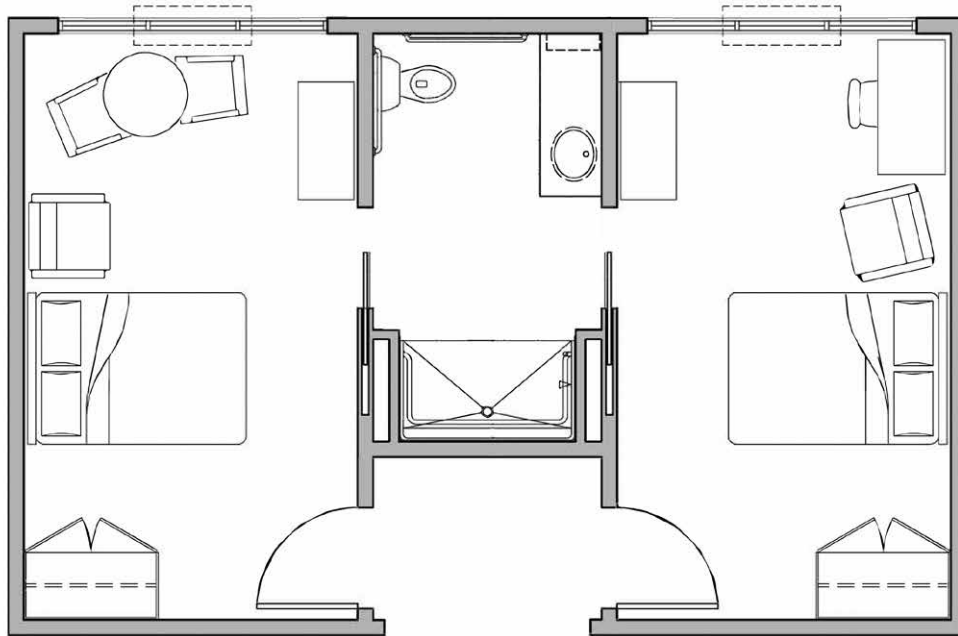
### Respite Care:

We offer a Respite program designed to give family caregivers a necessary break. This is your chance to have our caring staff enrich the life of your loved one, while you take a well-deserved rest.

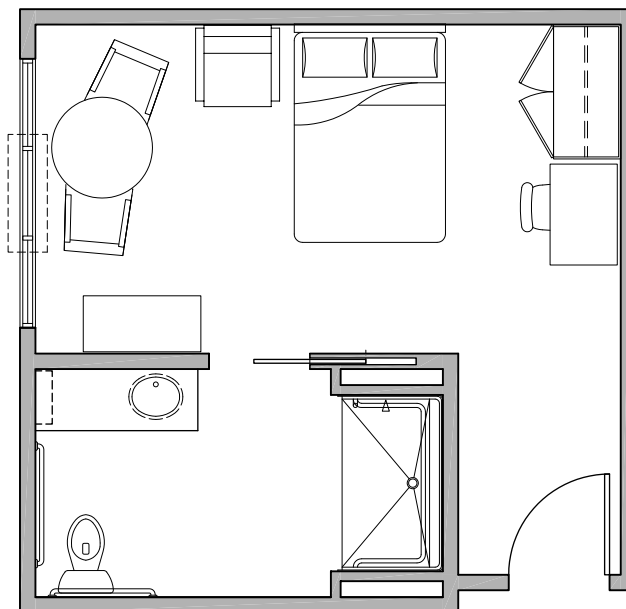
Are you ready to learn more about our unique specialized care services? To learn more about The Meadow at Mt. Bachelor Memory Care neighborhood please call 541-388-9800 and schedule a tour.



Semi-Private Suite with Shared Bathroom • 439 sq ft



Private Suite with Private Bathroom  
293 sq ft



## Escape to the Ideal Lifestyle...

Mt. Bachelor Assisted Living Assisted Living offers a wide array of apartment options within our community – whether you are looking for the convenience of a studio or the spaciousness of a one bedroom apartment, we can accommodate your needs. Keep life comfortable and stress free with our thoughtfully designed apartments providing all the features and space you need for living life to the fullest. Depending on the apartment you select, your residence at Mt. Bachelor may include the features below.

Assisted living apartment amenities include:

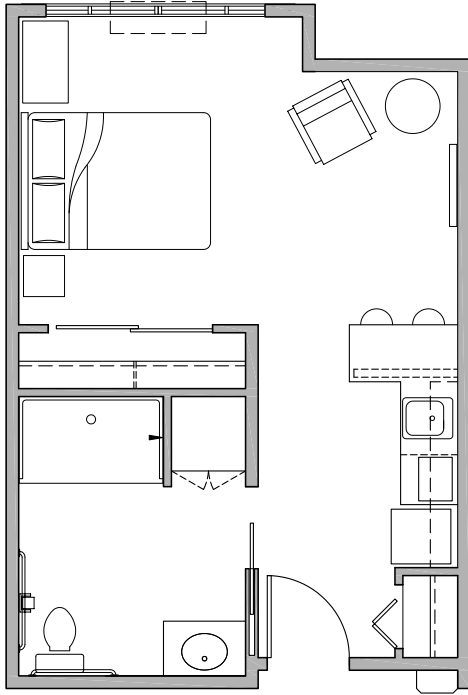
- Monthly rental with no buy-in or long-term lease
- Choice of studio and one bedroom apartments
- Linen and housekeeping services
- Maintenance of interior and exterior spaces
- 24-Hour emergency call system in each apartment
- Utilities including basic cable television (telephone, and high-speed internet excluded)
- Well-appointed finishes, spacious closets, and kitchenettes
- Wireless internet access in common areas

Assisted living services include:

- Assistance with personal needs such as bathing, dressing and grooming
- Medication management
- Select specialty diets offered
- Continence management
- Individually developed care plan with our residents preferences in mind
- Mobility and transferring assistance
- Respite services available

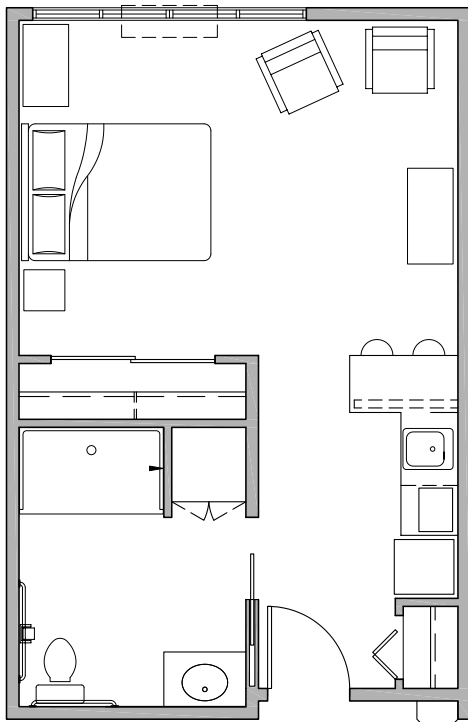
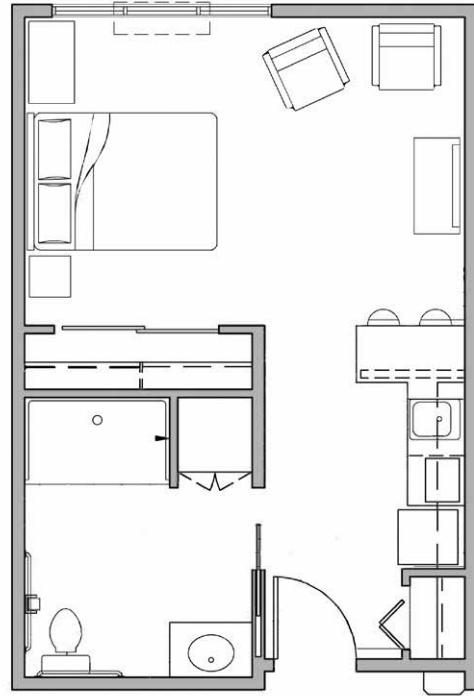
Are you ready to take advantage of a community that caters to your upscale tastes? To learn more about Mt. Bachelor Assisted Living and Memory Care, please call 541-388-9800.

# Assisted Living Floor Plans



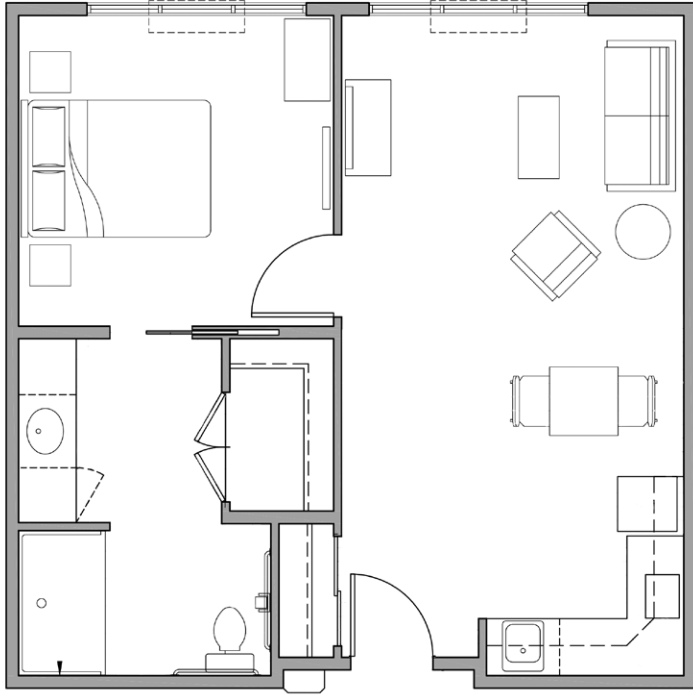
The Cascade  
369 sq ft

The Deschutes • 381 sq ft

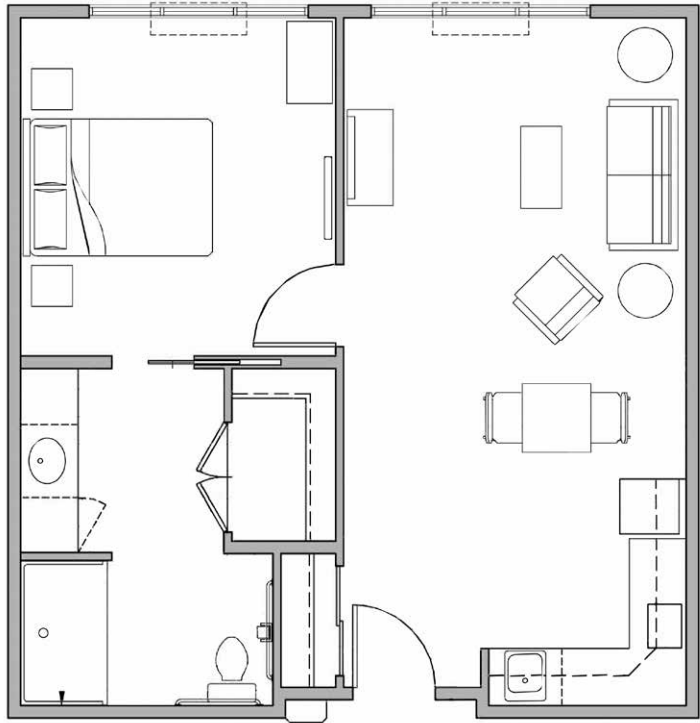


The Columbia  
397 sq ft

# Assisted Living Floor Plans



The Ponderosa  
579 sq ft



The Mt. Bachelor  
604 sq ft

## Indulge in All We Have to Offer...

Living at Mt. Bachelor Assisted Living and Memory Care will allow you to be free from the daily rigors of cooking and cleaning so you can maintain the liberties and freedoms of your retirement lifestyle in one of our spacious apartments. Our dedicated staff will take care of the grounds, the housekeeping and other chores; leaving you time to enjoy life's simple pleasures.

Our monthly hospitality package includes three delicious home-cooked meals each day, weekly housekeeping with linen service, planned events and activities, scheduled transportation, and paid utilities including basic cable television (does not include telephone and internet services). Your retirement can be as active or as relaxed as you prefer in our community – just like home, surrounded by your favorite collectables and furnishings.

Our amenities include:

- Pet friendly
- Chef-prepared meals
- Hair Salon
- Weekly housekeeping and linen service
- Entertainment, activities & outings
- Transportation provided for scheduled events
- Emergency call system
- Care Staff available 24/7
- Beautifully appointed community living areas
- Library
- Theater
- Craft room
- Fitness center
- Laundry center

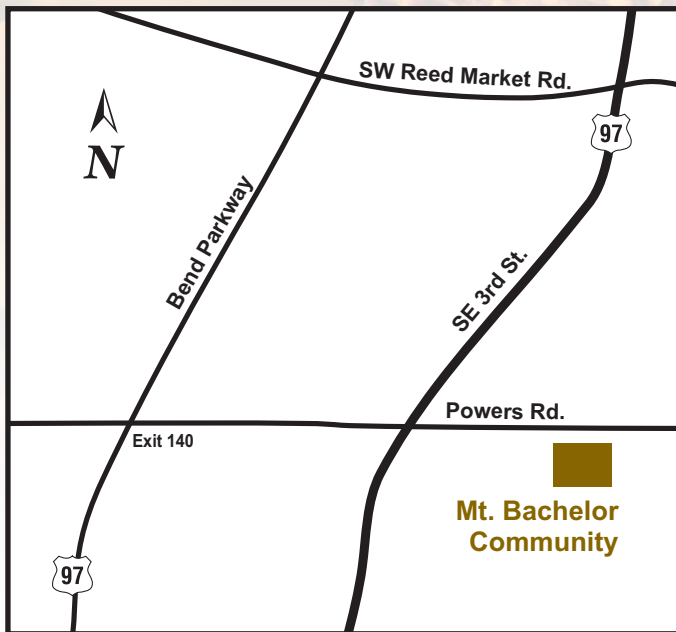
Are you ready to take advantage of all we have to offer? To learn more about Mt. Bachelor Assisted Living and Memory Care, please call 541-388-9800 and schedule a tour.





**20215 Powers Road  
Bend, OR 97702  
541-388-9800  
mtbachelorassistedliving.com**

## ***Here's how to find us...***



*Follow these easy driving directions.*

### **From Bend Parkway 97 (North or South):**

- Take Exit 140 Powers Road
- Head East on Powers Road for approximately one block
- You will find the Community on your right