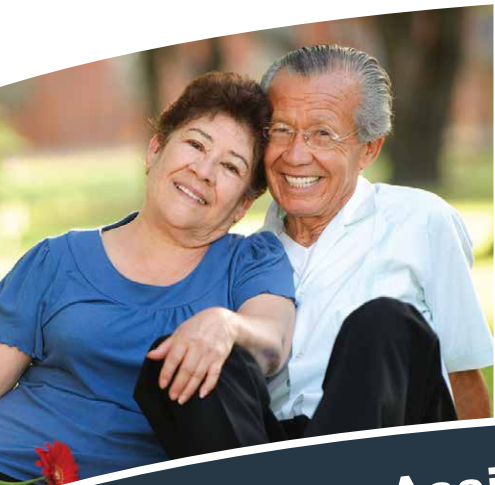




**Pelican Pointe**  
ASSISTED LIVING & MEMORY CARE



**Premier Assisted Living and Memory Care Community**



# ***A Nurturing and Uplifting Environment***



At Pelican Pointe Assisted Living and Memory Care in Klamath Falls, residents enjoy an active, engaging lifestyle that promotes wellness and independence. It is our goal to keep our residents linked to resources and opportunities in the community that will fulfill their needs, interests, and goals. Residents have many opportunities to participate in a variety of life enriching activities and events designed to stimulate the mind, body and soul. From cocktail-hour gatherings where you can learn about the nuances of a good Pinot Noir, to a discussion of the latest best seller in our Life-Long Learning series, to exploring new ways to stay healthy in a fitness class...expect the unexpected. When what you desire most is exactly where you want it to be, celebrate!



**Pelican Pointe**  
ASSISTED LIVING & MEMORY CARE



## Excellent Services Tailored to Different Needs...

Pelican Pointe Assisted Living and Memory Care offers comprehensive and caring Alzheimer's and dementia care. The mission of our supportive community is to serve the special needs of individuals with Alzheimer's disease, dementia and other forms of memory loss. The residence is a comforting environment, deftly incorporating safety and supportive cues throughout...even in the secured courtyard and inside walking path.

Pelican Pointe Assisted Living and Memory Care offers programs to help those individuals with memory loss maintain function. Our individually tailored life program provides the stability of a routine while maximizing independence and autonomy. We develop close bonds between residents, their families, and our caregivers. Memory care can be different...let Pelican Pointe Assisted Living and Memory Care show you how.

### Apartment Choice:

This is a very private setting where residents are comforted by having their own décor, furnishings and more. We offer private apartments with private restrooms. All apartments come with 24-Hour emergency call systems, closets, individualized heating/cooling and access to community amenities.

### Some of our Personalized Services include:

- Medication management
- Showering/bathing
- Dressing and laundry
- Personal hygiene and grooming
- Mobility and transferring
- Continence management
- Level appropriate activities
- Assistance with eating

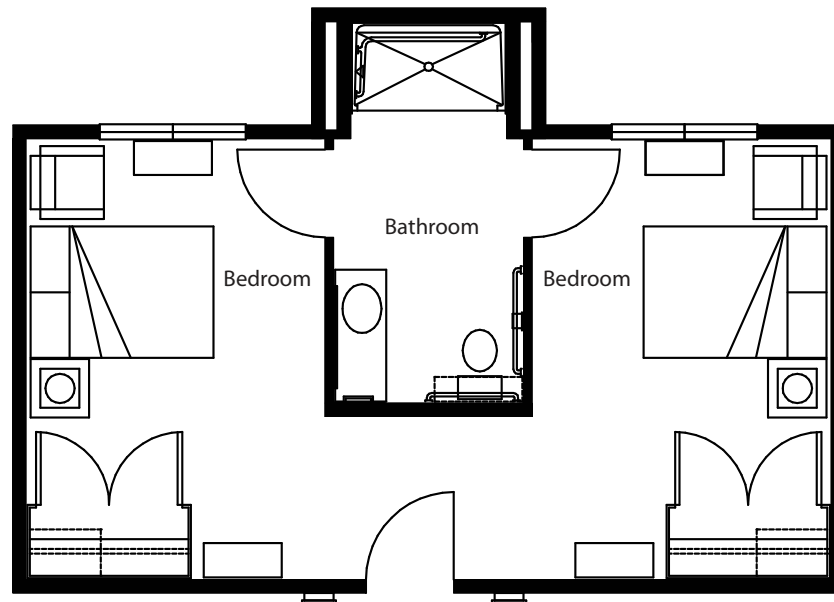
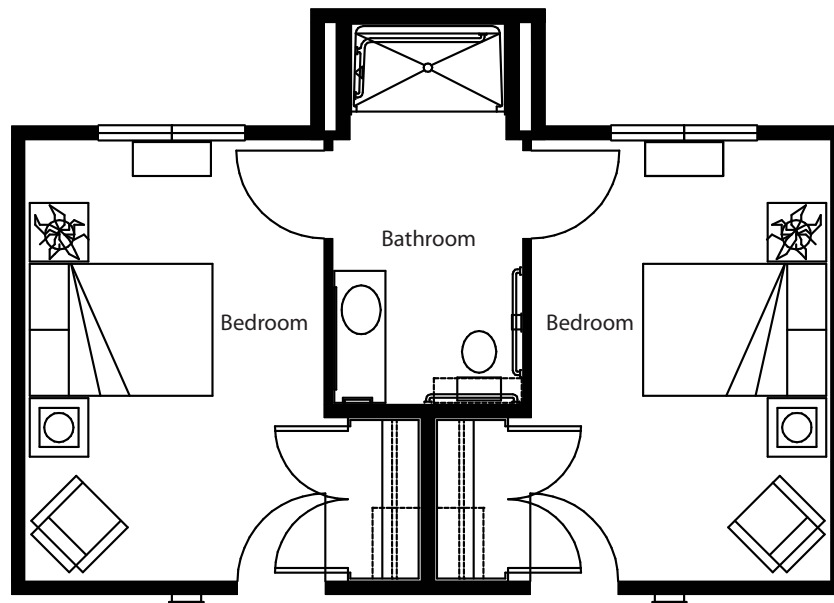
### Respite Care:

We offer a respite care program designed to give family caregivers a necessary break. This is your chance to have our caring staff enrich the life of your loved one, while you take a well-deserved rest.

Are you ready to learn more about our unique specialized care services? To learn more about Pelican Pointe Assisted Living and Memory Care, please call 541-882-8900 and schedule a tour.



## Private with Shared Bathroom • 480 sq ft







## Escape to the Ideal Lifestyle...

Pelican Pointe Assisted Living and Memory Care will offer a wide array of apartment options within our community – whether you are looking for the convenience of a studio or the spaciousness of a one bedroom apartment, we can accommodate your needs. Keep life comfortable and stress free with our thoughtfully designed apartments providing all the features and space you need for living life to the fullest. Depending on the apartment you select, your residence at Pelican Pointe Assisted Living and Memory Care may include the features below.

Assisted living apartment amenities include:

- Monthly rental with no buy-in or long-term lease
- Choice of studio and one bedroom apartments
- Linen and housekeeping services
- Maintenance of interior and exterior spaces
- 24-Hour emergency call system in each apartment
- Utilities (telephone, basic cable and high-speed internet excluded)
- Well-appointed finishes, spacious closets, and kitchenettes
- Wireless internet access in common areas

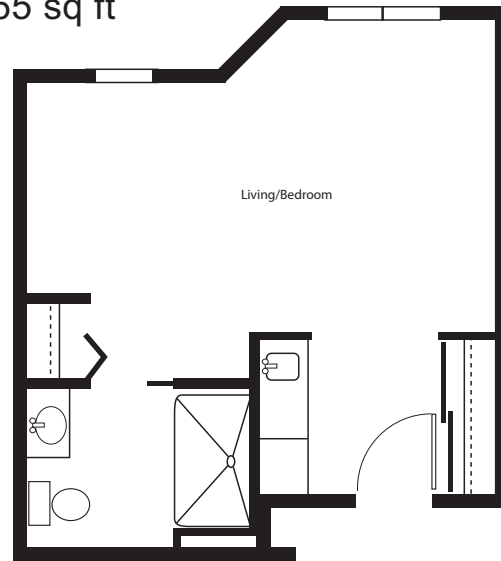
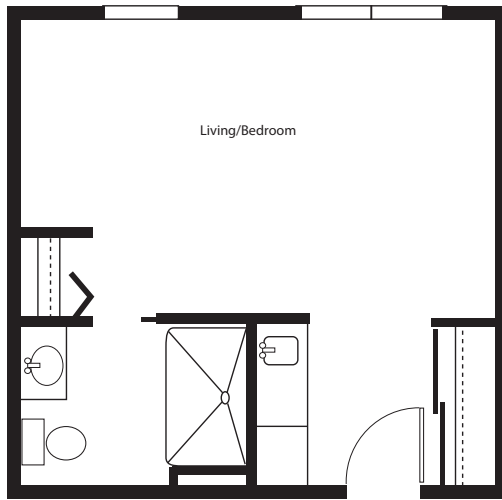
Assisted living services include:

- Assistance with personal needs such as bathing, dressing and grooming
- Medication management
- Select specialty diets offered
- Continence management
- Individually developed care plan with our residents preferences in mind
- Mobility and transferring assistance
- Respite services available

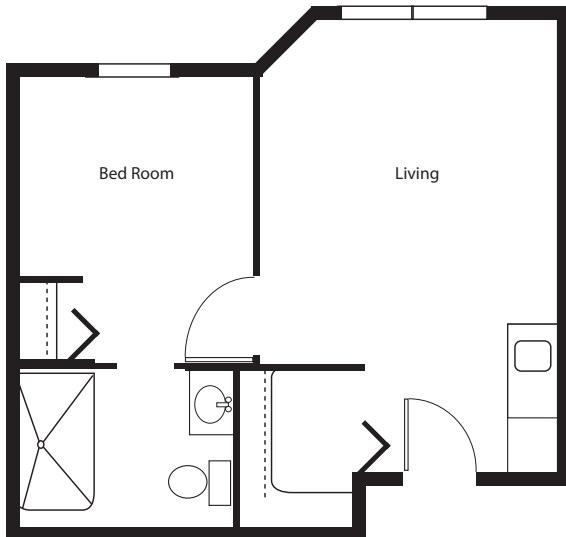
Are you ready to take advantage of a community that caters to your upscale tastes? To learn more about Pelican Pointe Living, please call 541-882-8900.



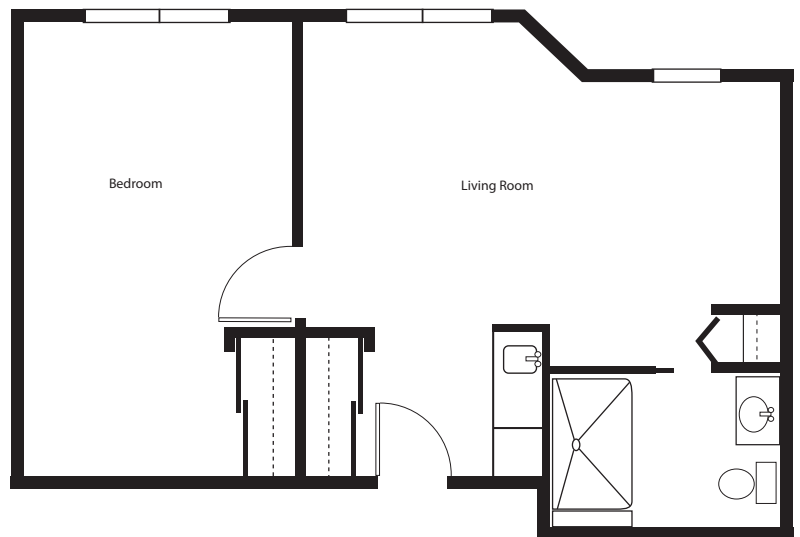
Studio • 359-365 sq ft



One Bedroom • 437 sq ft

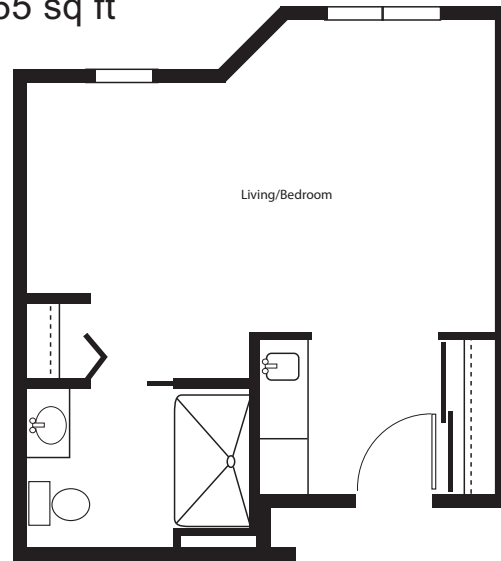
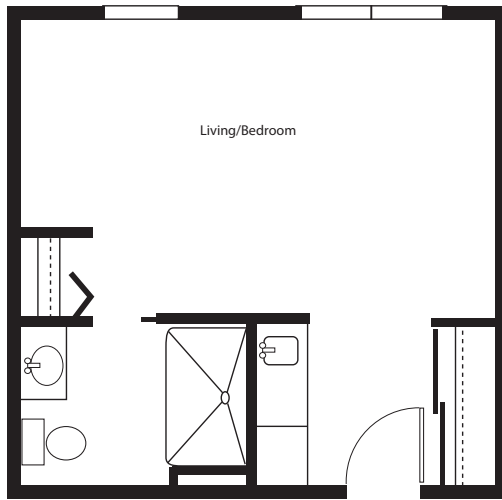


One Bedroom Deluxe • 596 sq ft

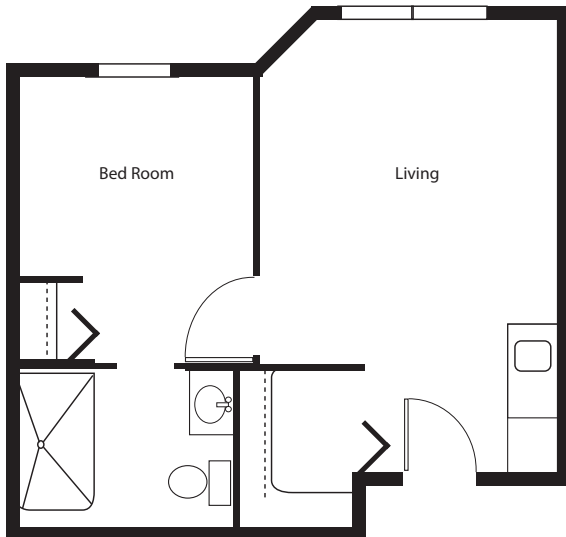




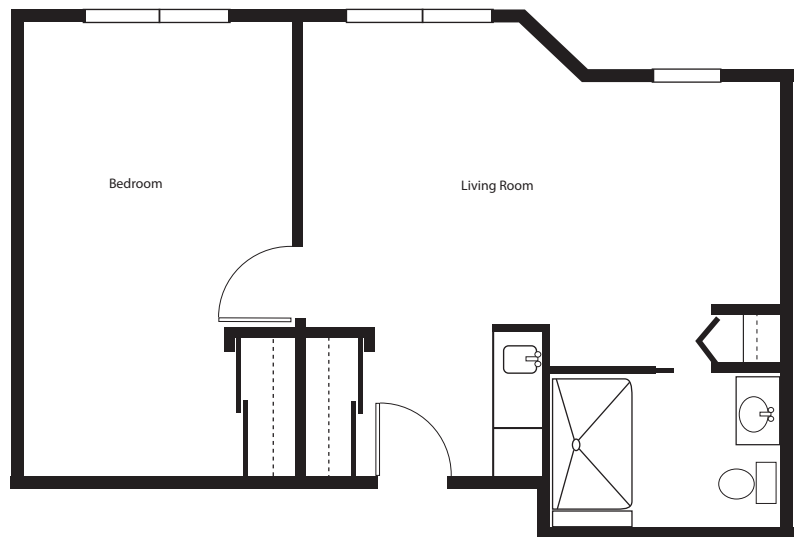
Studio • 359-365 sq ft



One Bedroom • 437 sq ft



One Bedroom Deluxe • 596 sq ft





## Indulge in All We Have to Offer...

Nestled in the Klamath Basin on the eastern slopes of the Cascade Mountains and on the southern shore of the Upper Klamath Lake with over 300 days of sunshine each year, the scenery enveloping Pelican Pointe Assisted Living and Memory Care Community is exceptional. But as amazing as the scenery is outside the doors of our community, we think the best we have to offer lies within. Pelican Pointe boasts beautiful apartments with top notch amenities and activities. From the well-appointed finishes in our apartments to the elegant dinners in our grand dining room to the exceptional care provided by our staff, everything at Pelican Pointe is designed with your enjoyment in mind.

Our amenities include:

- Monthly rental with no buy-in or long-term lease
- A variety of menu choices with a focus on home style dining, seasonal entrées and desserts, and incorporating nutritious options, all prepared daily with your palate in mind.
- Library with computer, arts and crafts room and soda fountain parlor
- Beauty salon and barbershop
- Cozy fireplace lounges and community spaces
- Private dining room available for special events
- Weekly linen service, housekeeping and landscaping
- Outdoor courtyard
- Personalized care plans
- Recreation, wellness and life enrichment programs
- Chef's Kitchen for cooking demonstrations
- 24-Hour emergency call system
- Complimentary transportation for events, shopping and outings
- Convenient Location: Merle West Medical Center and Medical Offices close by
- Family pets welcome\*

While we have complimentary transportation and a wide array of social events planned, with amenities like these, you may never feel the need to leave the doors of Pelican Pointe. Are you ready to take advantage of all we have to offer? To learn more about Pelican Pointe Assisted Living, please call 541-882-8900 and schedule a tour.

\*Per our guidelines



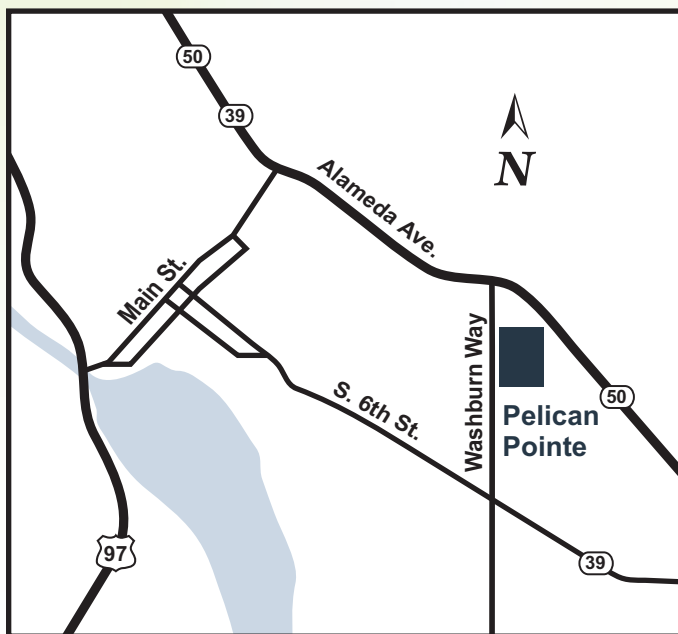


# Pelican Pointe

ASSISTED LIVING & MEMORY CARE

**615 Washburn Way  
Klamath Falls, OR 97603  
541-882-8900  
pelicanpointealf.com**

## *Here's how to find us...*



*Follow these easy driving directions.*

### **From US 97 North:**

- Highway 97 turns into Crater Lake Parkway
- Stay on Crater Lake Parkway
- Turn right at Washburn Way
- Pelican Pointe will be on your left