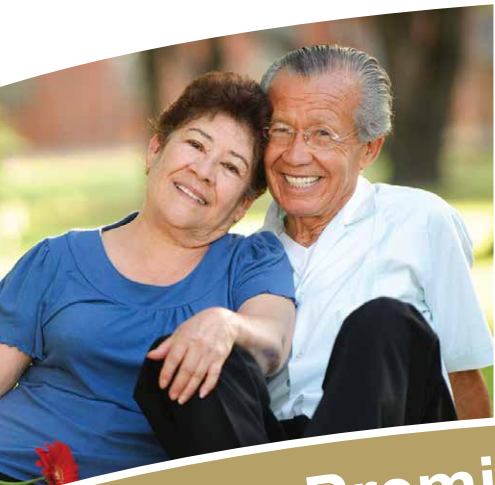




# SUNOL CREEK MEMORY CARE



Premier Memory Care Community



## *A Nurturing and Uplifting Environment*



Sunol Creek Memory Care provides a full range of living options for those special residents living with memory challenges. Equally impressive is our commitment to providing you and your loved one with impeccable service at every level. Every day at Sunol Creek Memory Care we make it a goal to go above and beyond to enrich the lives of our residents. We offer exceptional care, attentive wellness programs and social activities in a family atmosphere to create a community that supports the needs of those who live here. Our talented team of dedicated and caring staff are there when you need them.

Sunol Creek Memory Care...where friends take care of friends.



**SUNOL CREEK  
MEMORY CARE**



## Excellent Services Tailored to Different Needs...

Sunol Creek Memory Care offers comprehensive and caring Alzheimer's and dementia care. The mission of our supportive community is to serve the special needs of individuals living with Alzheimer's disease, dementia, and other forms of memory loss. The residence is a comforting environment, deftly incorporating safety and supportive cues throughout...even in the secured courtyard and indoor walking paths.

Sunol Creek Memory Care offers the Pathways Program, based on Montessori principles, to help those individuals with memory loss maintain function and enhance their daily life. Our individually tailored life program provides the stability of a routine while maximizing independence and autonomy. We develop close bonds between residents, their families, and our caregivers.

Memory care can be different...let Sunol Creek show you how.

### Apartment Choice:

This is a very private setting where residents are comforted by having their own decor, furnishings and more. We offer apartments with either shared or private wheelchair-friendly restrooms. All apartments come with 24-Hour emergency call systems, closets, individualized heating/cooling and a full list of amenities.

### Some of our Personalized Services include:

- Medication management
- Showering and bathing
- Dressing and laundry
- Personal hygiene and grooming
- Mobility and transferring
- Continence management
- Level appropriate activities
- Assistance with eating

### Respite Care:

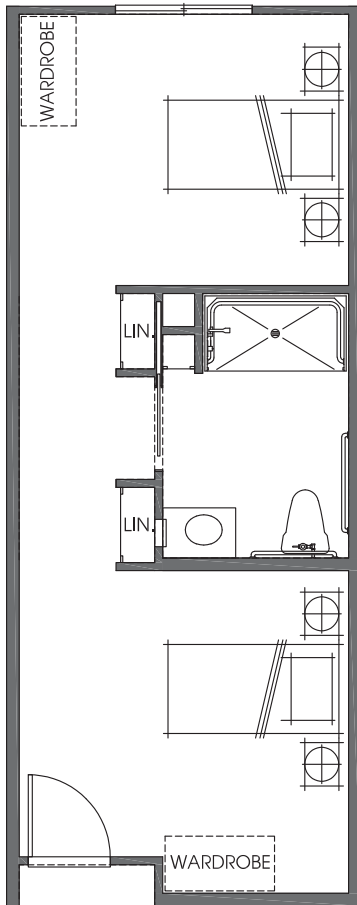
We offer a respite care program designed to give family caregivers a necessary break. This is your chance to have our caring staff enrich the life of your loved one, while you take a well-deserved rest.

Are you ready to learn more about our unique specialized care services? To learn more about Sunol Creek please call 925-846-8283 and schedule a tour.

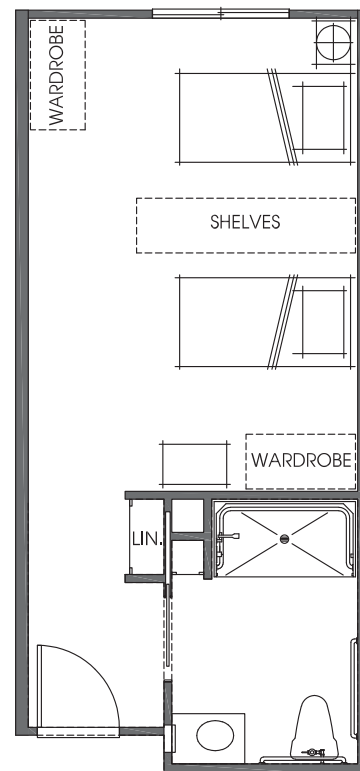




## Semi Private

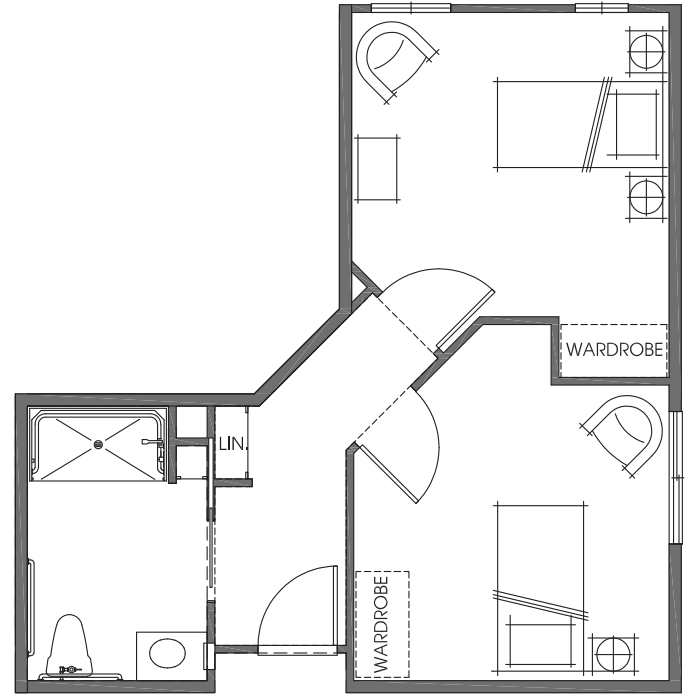
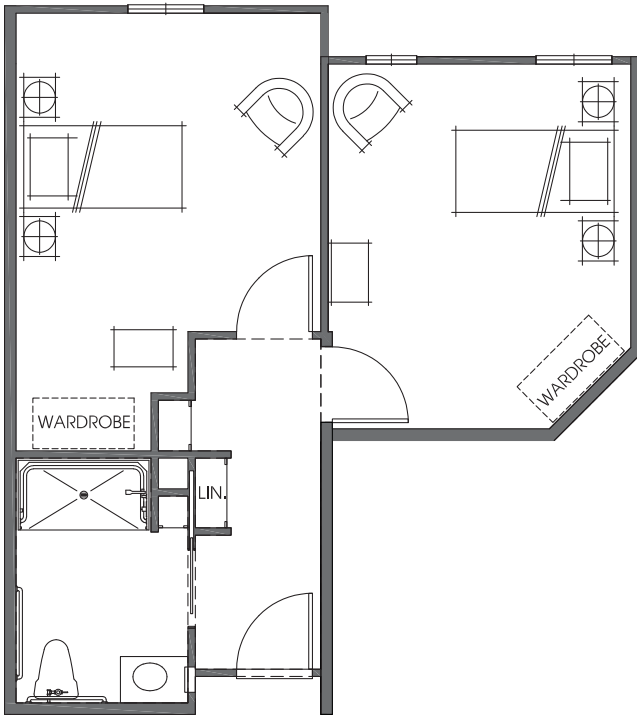


## Companion



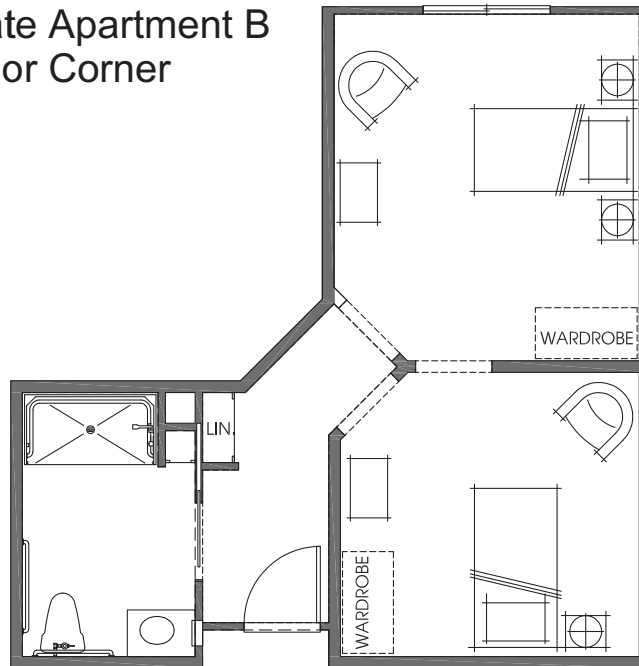


## Private Apartment A



## Private Apartment B

## Private Apartment B Interior Corner





## All the Comforts of Home...

Sunol Creek Memory Care is designed with the residents in mind, providing an atmosphere that is inviting and comfortable for both your loved one and you. Sunol Creek Memory Care feels like you are in someone's home.

Our beautiful community offers a sense of familiarity and comfort, reducing the feelings of loneliness and confusion. We understand how important this is to our residents and their loved ones.

Our amenities include:

### **Three Delicious Meals a Day**

Home cooked meals with the ability to meet several special diets,  
served family style in neighborhood dining areas

### **Care Staff on Site**

24-Hours a day, 7 days a week

### **Familiar Daily Routine**

Planned activities and tailored routines created in our Pathways Program, based on Montessori principles, are used to enhance residents' dignity and self-esteem

### **Dementia Specific Activity Program**

Individual and group activities such as memory boxes, patterning, creative arts, as well as exercise, outings, social events and more

### **Barrier-Free Floor-Plan**

Community lay-out offers continuous walkways with indoor and outdoor opportunities, familiar living areas, and quiet spaces

### **Weekly Housekeeping**

Includes flat linens as well as personal laundry if desired

### **Emergency Call System**

Puts residents in contact with staff if an emergency arises

### **Beauty/Barber Shop On-Site**

For your convenience

Sunol Creek partners with families to find the best way to create a fulfilling, safe and dignified lifestyle for every resident. Our goal is to create a loving home environment that reassures residents and families that friends surround them.

To learn more about Sunol Creek Memory Care, please call 925-846-8283 and schedule a tour.

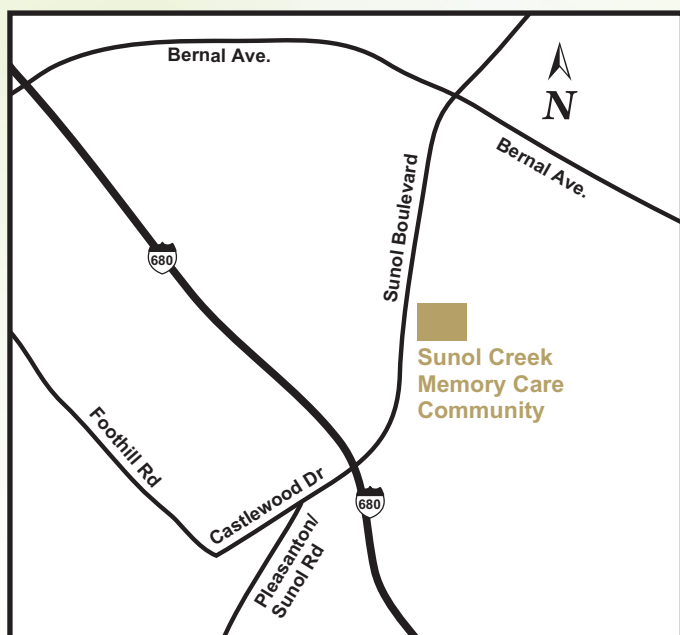


## SUNOL CREEK MEMORY CARE

**5980 Sunol Creek Boulevard  
Pleasanton, CA 94566  
925-846-8283  
[sunolcreekmemorycare.com](http://sunolcreekmemorycare.com)**

RCFE License #019200484

### ***Here's how to find us...***



*Follow these easy driving directions.*

#### **From I-680 North or South:**

- Take the Sunol Boulevard/ Castlewood Dr. exit toward Pleasanton.
- Turn left onto Sunol Boulevard, continue a half mile.
- Sunol Creek Memory Care will be on the right.