

# THE TERRACE at BEVERLY LAKE

A Memory Care Residence



Premier Memory Care Community



# ***A Nurturing and Uplifting Environment***



The Terrace at Beverly Lake Memory Care provides a full range of living options for those special residents living with memory challenges. Equally impressive is our commitment to providing you and your loved one with impeccable service at every level. Every day at The Terrace at Beverly Lake Memory Care we make it a goal to go above and beyond to enrich the lives of our residents. We offer exceptional care, attentive wellness programs and social activities in a family atmosphere to create a community that supports the needs of those who live here. Our talented team of dedicated and caring staff are there when you need them. The Terrace at Beverly Lake Memory Care...where friends take care of friends.

**THE TERRACE**  
**at BEVERLY LAKE**  
 A Memory Care Residence



## Excellent Services Tailored to Different Needs...

The Terrace at Beverly Lake Memory Care offers comprehensive and caring Alzheimer's and dementia care. The mission of our supportive community is to serve the special needs of individuals living with Alzheimer's disease, dementia, and other forms of memory loss. The residence is a comforting environment, deftly incorporating safety and supportive cues throughout...even in the secured courtyard and indoor walking paths.

The Terrace at Beverly Lake provides an innovative program, based on Montessori principles, to help those individuals with memory loss maintain function and enhance their daily life. Our individually tailored life program provides the stability of a routine while maximizing independence and autonomy. We develop close bonds between residents, their families, and our caregivers.

Memory care can be different...let The Terrace at Beverly Lake show you how.

### Apartment Choice:

This is a very private setting where residents are comforted by having their own decor, furnishings and more. We offer apartments with either shared or private wheelchair-friendly restrooms. All apartments come with 24-Hour emergency call systems, closets, individualized heating/cooling and a full list of amenities.

### Some of our Personalized Services include:

- Medication management
- Showering and bathing
- Dressing and laundry
- Personal hygiene and grooming
- Mobility and transferring
- Continence management
- Level appropriate activities
- Assistance with eating

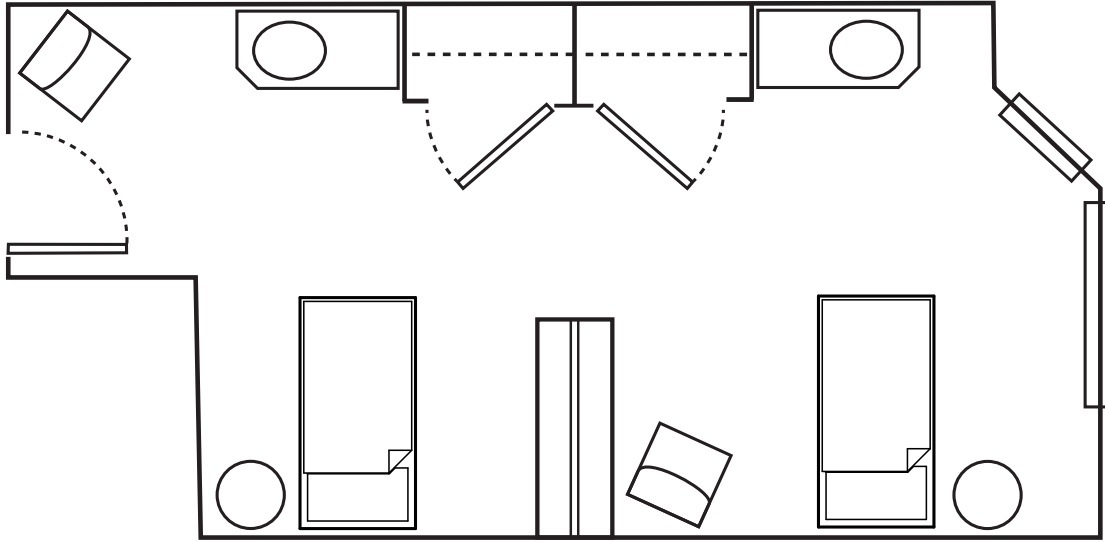
### Respite Care:

We offer a respite care program designed to give family caregivers a necessary break. This is your chance to have our caring staff enrich the life of your loved one, while you take a well-deserved rest.

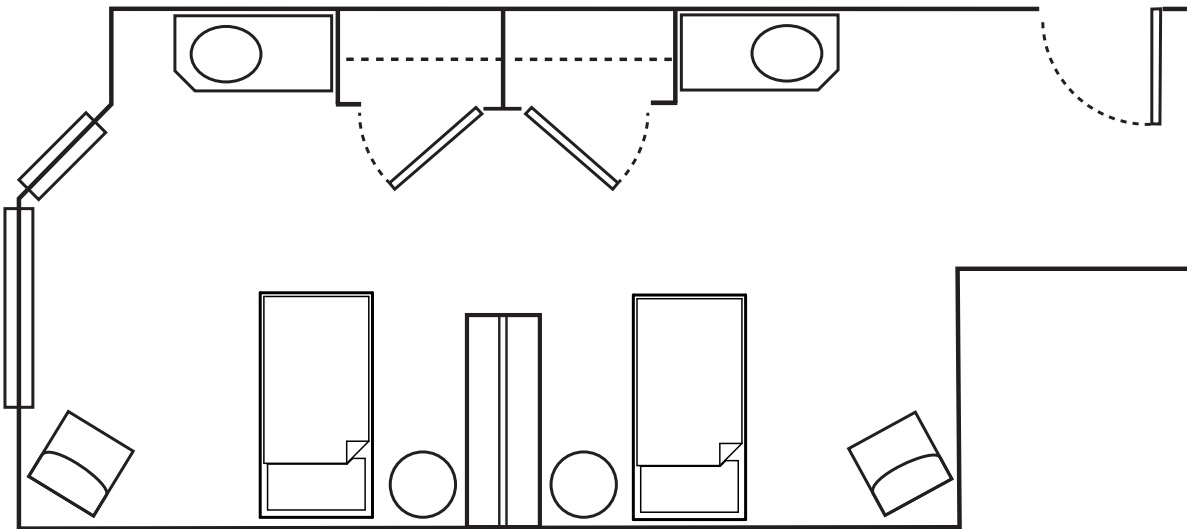
Are you ready to learn more about our unique specialized care services? To learn more about The Terrace at Beverly Lake please call 425-348-8800 and schedule a tour.



### Companion Suite A

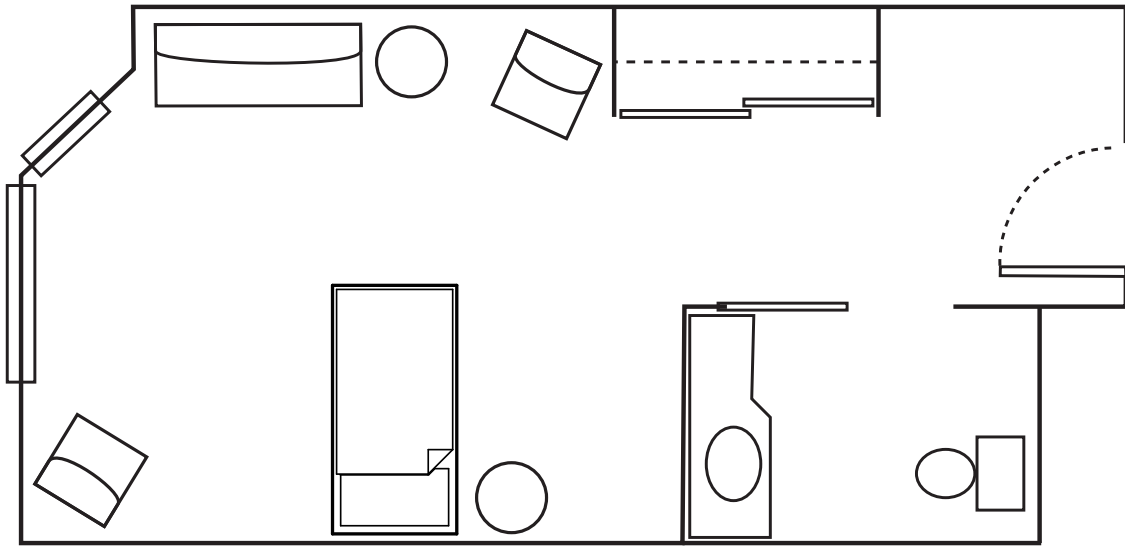


### Companion Suite B

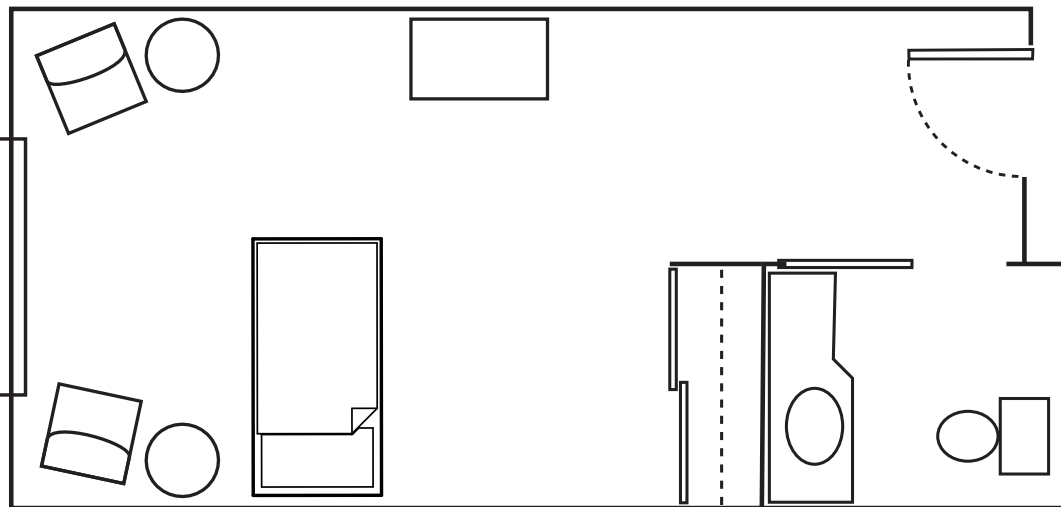




Private Suite C



Private Suite D





## All the Comforts of Home...

The Terrace at Beverly Lake Memory Care is designed with the residents in mind, providing an atmosphere that is inviting and comfortable for both your loved one and you. The Terrace at Beverly Lake feels like you are in someone's home.

Our beautiful community offers a sense of familiarity and comfort, reducing the feelings of loneliness and confusion. We understand how important this is to our residents and their loved ones.

Our amenities include:

### **Three Delicious Meals a Day**

Home cooked meals with the ability to meet several special diets, served family style in neighborhood dining areas

### **Care Staff on Site**

24-Hours a day, 7 days a week

### **Familiar Daily Routine**

Planned activities and tailored routines created in our Pathways Program, based on Montessori principles, are used to enhance residents' dignity and self-esteem

### **Dementia Specific Life Enrichment Program**

Individual and group activities developed within a Montessori-based philosophy that creates a specialized life-enriching environment that affords each individual maximum self-expression. We are committed to delivering a quality program that meets the resident's physical, social, spiritual, and emotional needs.

### **Weekly Housekeeping**

Includes flat linens as well as personal laundry if desired

### **Emergency Call System**

Puts residents in contact with staff if an emergency arises

### **Beauty/Barber Shop On-Site**

For your convenience

The Terrace at Beverly Lake partners with families to find the best way to create a fulfilling, safe and dignified lifestyle for every resident. Our goal is to create a loving home environment that reassures residents and visiting family that friends surround them.

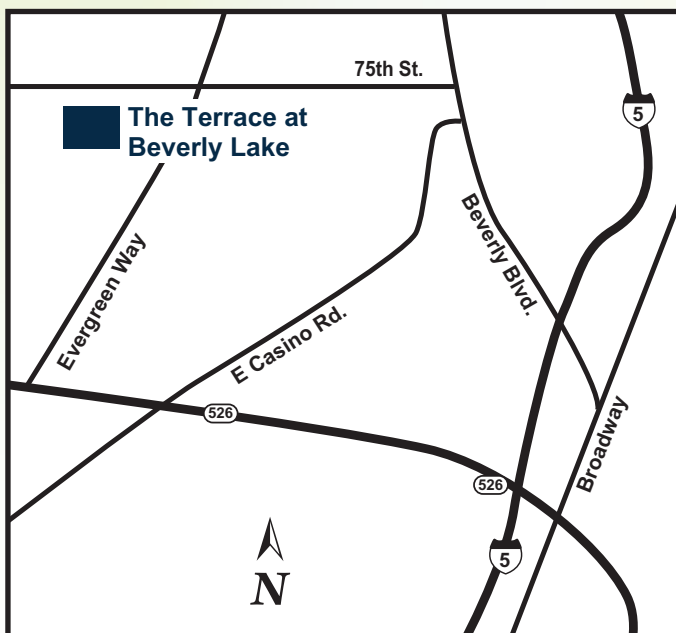
To learn more about The Terrace at Beverly Lake Memory Care, please call 425-348-8800 and schedule a tour.

# THE TERRACE at BEVERLY LAKE

 A Memory Care Residence

524 75th Street SE  
Everett, WA 98203  
425-348-8800  
[theterraceatbeverlylake.com](http://theterraceatbeverlylake.com)

## Here's how to find us...



*Follow these easy driving directions.*

### **From 1-5 North or South:**

- Take exit 189 for WA-527 toward Everett Mall Way/WA-99
- Keep left at the fork, follow signs for WA 526 W/Mukilteo/Whidbey Island Ferry, merge onto WA-526 W
- Take the Evergreen Way exit, turn right onto Evergreen Way
- Turn left onto 75th St SE, community will be on your left